

COMMERCIAL ESTATE AGENTS and PROPERTY MANAGEMENT

SUBSTANTIAL LOCK-UP SHOP TO LET

28-30 SOUTHAMPTON ROAD, RINGWOOD. BH24 1HY

LOCATION

Southampton Road is a prime trading location within the town centre and nearby multiples include Boots, Iceland, Hayes Travel and Domino's together with a variety of private retail traders, Ringwood is a busy and popular New Forest market town just off the A31 trunk road providing day to day shopping facilities for a wide area.

DESCRIPTION

A detached building occupying a corner and very strong trading location, originally built as a supermarket but now providing a rare opportunity for a multiple seeking a presence in the town.

ACCOMMODATION

Ground Floor – Retail area approx. 46.66m x 16.65m (153'1" x 54'8"). 683.30m² (7,355 ft²).

Rear Storage/Office.

Gross Internal Area approx. 767.70m² (8,263 ft²)

OUTSIDE

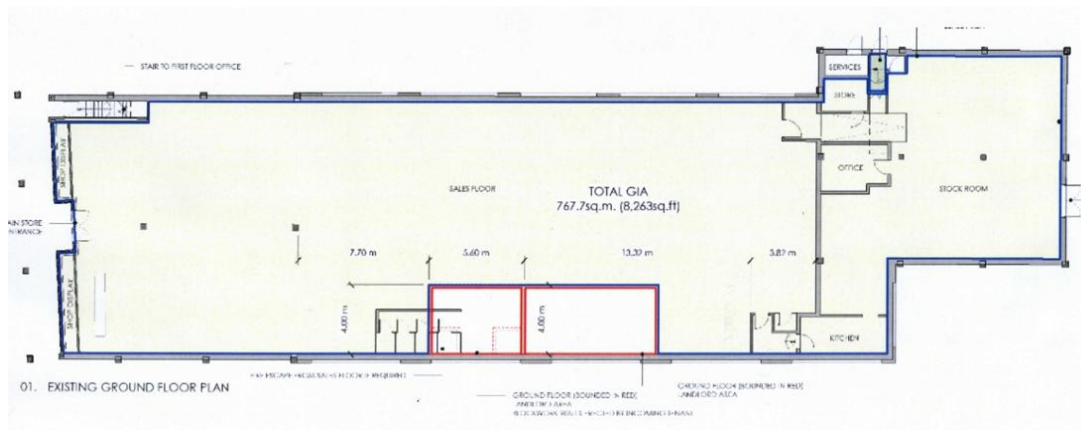
A large car park to the rear with loading doors to the rear stock room.



Cont'd

LEASE TERMS	A new excluded FRI lease is available for a duration to be agreed, with upward only rent reviews.
RENT	Rental offers are invited for this substantial opportunity.
RATES	Rateable value £62,000
VIEWING	Strictly by appointment only please through the Agents.

ENERGY PERFORMANCE ASSET RATING: B

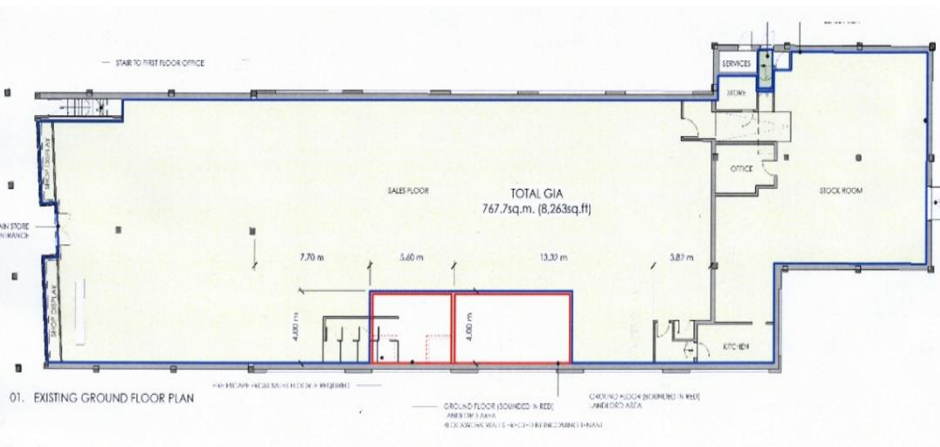


11 Christchurch Road
Ringwood
Hampshire BH24 1DG
Phone (01425) 470570
Fax (01425) 480084

Carr & Neave

enquiry@carrandneave.co.uk • www.carrandneave.co.uk

COMMERCIAL ESTATE AGENTS and PROPERTY MANAGEMENT



Messrs Carr & Neave for themselves and for the vendors or lessors of these properties whose agents they are give notice that: (i) the particulars are set out as a general outline only for the guidance of intended purchasers or lessees, and do not constitute, nor constitute part of, an offer or contract; (ii) all descriptions, dimensions, reference to condition and necessary permissions for use and occupation, and other details are given without responsibility and any intending purchasers or tenants should not rely on them as statements or representations of fact but must satisfy themselves by inspection or otherwise as to the correctness of each of them; (iii) no person in the employment of Messrs Carr & Neave has any authority to make or give any representation or warranty or enter into any contract whatsoever in relation to a property.